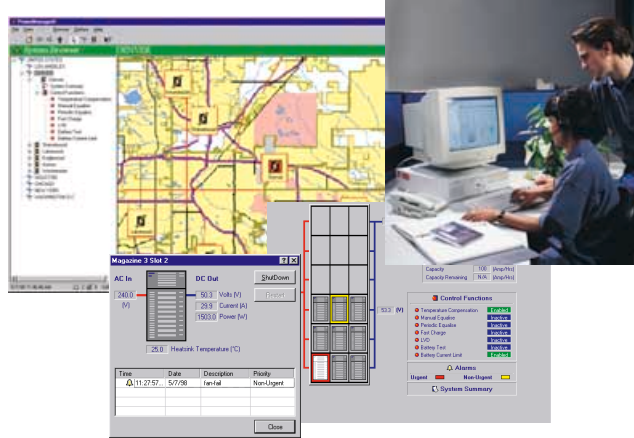


# Intergy PowerManagerII Control and Monitoring Software

## Features

- ▶ Windows® Based Graphical User Interface
- ▶ Real-Time Monitoring
- ▶ Automatic Alarm Indication
- ▶ Alarm and Activity Logging
- ▶ On-Line Access to System Control Functions
- ▶ Reduces the Need for Site Visits
- ▶ International Language Options
- ▶ User Configurable Navigation Maps
- ▶ Remote Battery Testing



PowerManagerII software provides effective remote management for Intergy DC power systems. The intuitive, Windows® - based graphical user interface enables you to quickly 'zoom in' and view concise summary information, or specific control functions, key operational data, or alarm details.

PowerManagerII is cost-effective. Remote management can reduce operating and maintenance costs. The latest power system information is available where and when you want it, greatly reducing the need for site visits. Alarms are highlighted and detailed, to help you analyze faults and produce maintenance histories and schedules.

PowerManagerII is comprehensive. You can connect as many power systems as you like, and all necessary data is clearly presented.

PowerManagerII is flexible. You can set up area map views of urban areas and wider regions, to help you visually navigate to any site—the choices are yours. And it's simple to add new maps and site locations

## Remote Control and Monitoring

PowerManagerII can control and monitor power equipment for multiple sites from one central location. It provides real-time graphical displays of system operating conditions, and monitors all system functions. For systems with the SM30 or SM50 Supervisory Module, it will also monitor individual rectifier modules.

## Event Logs and Data Logs

PowerManagerII lists data from each site. This includes all alarms, with activation details. Historical data can be recorded for fault analysis

and preparation of maintenance schedules. The information can be filtered, sorted or exported to other applications.

## Customization

PowerManagerII is designed for easy customization. Maps and locations of the sites can be added to the PowerManagerII interface. In addition to Intergy Power Systems, air conditioning equipment and intruder alarms and other plant connected to the system Supervisory Module I/O connections, can also be monitored. With the Site Manager option, PowerManagerII can monitor a wide range of inputs using SiteSure modules.

# Intergy PowerManagerII Control and Monitoring Software

## ► Control Functions

*For complete product specifications contact your local Intergy representative*

PowerManagerII includes graphical displays of all system control processes. All parameters are displayed together with real-time displays of the system operating conditions:

System schematiC	Displays operating conditions and system status.
Individual rectifier	PowerManagerII monitors individual rectifier performance.
System summary	Graphical real-time display of system status.
System control functions	Display of output voltage control systems.
Temperature Compensation	Set temperature compensation parameters for optimum battery charging.
Manual Equalize	Initiate battery equalize charge.
Periodic Equalize	Set the duration and level of auto battery equalize charges.
Fast Charge	Set-up fast battery re-charge parameters for optimum system recovery after mains outage.
Low Voltage Disconnect	Set the operational parameters of the low voltage disconnect module.
Battery Current Limit	Set the maximum battery re-charge current.
Battery Test	Conduct on-line battery tests to determine battery condition.
Discharge Test	Calibrates the Battery Capacity remaining algorithm.

## ► Data Communication Networks

The Intergy Customer Services Team offers a complete installation and software customization service, and can provide advice on integration of PowerManagerII into existing data networks.

## ► Brief Technical Specifications

Computer Minimum Requirements	Windows 98, Windows NT 4.0 or later Ram: 16Mb Windows 98, 24Mb Windows NT Standard Serial port (Com port) CD-ROM (3 1/2 inch floppy disc version available on request)
Communications Protocols	SNMP (Can emit traps) S3P three layer protocol
Communications Interfaces	RS232, RS485, Ethernet, TCP/IP, modem
User Configurable Graphic Format	Windows bitmap format (.BMP), or Windows Metafile (.WMF) file formats supported
Hardware Included	Copy protect device, null modem cable

*In the interests of continual product improvement all specifications are subject to change without notice.*